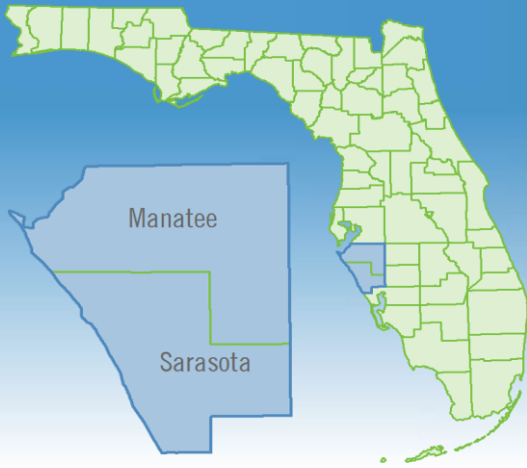


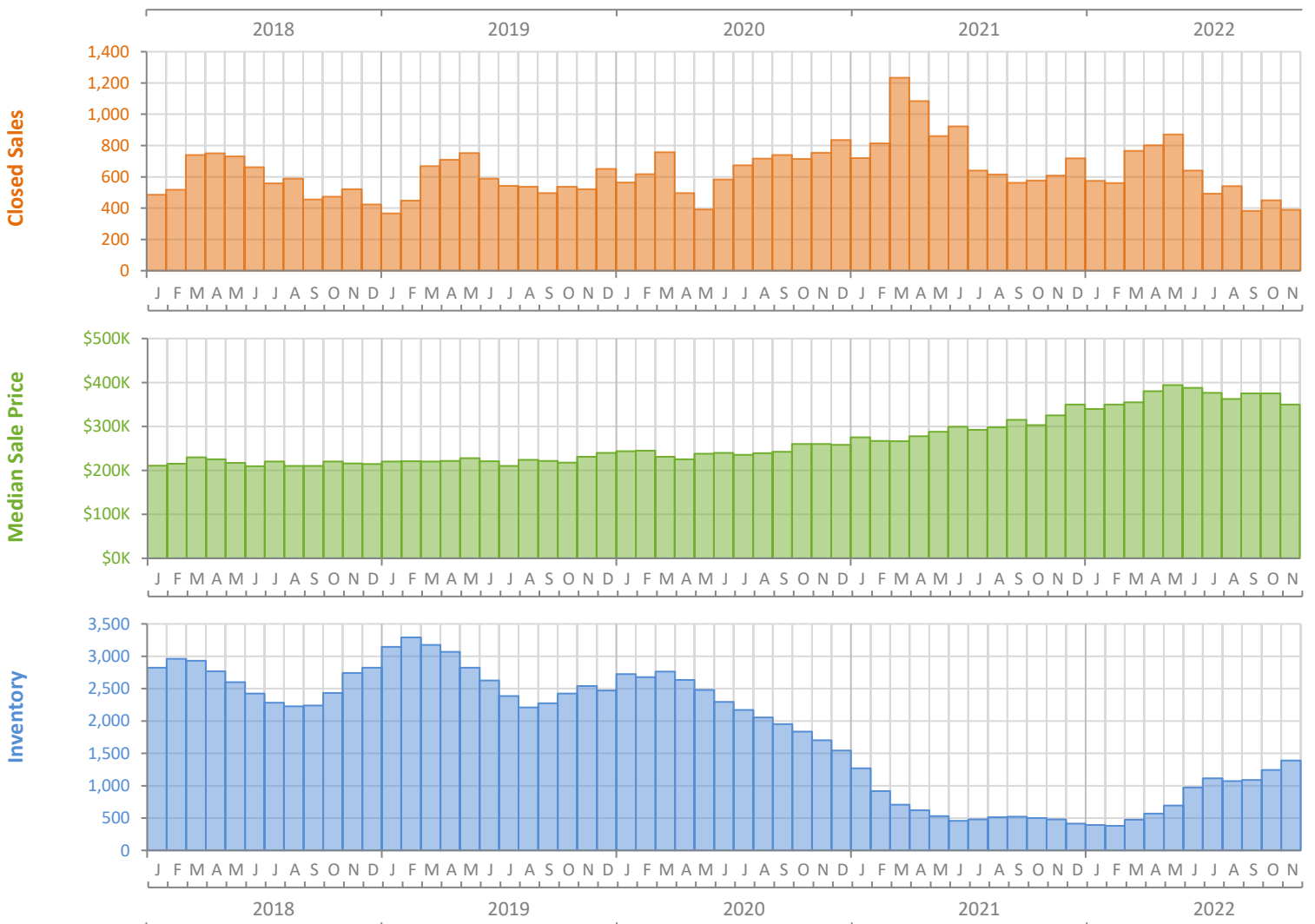
# Monthly Market Summary - November 2022

## Townhouses and Condos

### North Port-Sarasota-Bradenton MSA



|  | November 2022   | November 2021   | Percent Change Year-over-Year |
|--|-----------------|-----------------|-------------------------------|
| Closed Sales                           | 389             | 609             | -36.1%                        |
| Paid in Cash                           | 244             | 338             | -27.8%                        |
| Median Sale Price                      | \$350,000       | \$325,000       | 7.7%                          |
| Average Sale Price                     | \$466,464       | \$430,419       | 8.4%                          |
| Dollar Volume                          | \$181.5 Million | \$262.1 Million | -30.8%                        |
| Med. Pct. of Orig. List Price Received | 97.8%           | 100.0%          | -2.2%                         |
| Median Time to Contract                | 16 Days         | 7 Days          | 128.6%                        |
| Median Time to Sale                    | 65 Days         | 48 Days         | 35.4%                         |
| New Pending Sales                      | 427             | 647             | -34.0%                        |
| New Listings                           | 660             | 647             | 2.0%                          |
| Pending Inventory                      | 864             | 1,172           | -26.3%                        |
| Inventory (Active Listings)            | 1,387           | 478             | 190.2%                        |
| Months Supply of Inventory             | 2.3             | 0.6             | 283.3%                        |



# Monthly Distressed Market - November 2022

## Townhouses and Condos

### North Port-Sarasota-Bradenton MSA



|                 |                   | November 2022 | November 2021 | Percent Change Year-over-Year |
|-----------------|-------------------|---------------|---------------|-------------------------------|
| Traditional     | Closed Sales      | 389           | 607           | -35.9%                        |
|                 | Median Sale Price | \$350,000     | \$325,000     | 7.7%                          |
| Foreclosure/REO | Closed Sales      | 0             | 1             | -100.0%                       |
|                 | Median Sale Price | (No Sales)    | \$369,000     | N/A                           |
| Short Sale      | Closed Sales      | 0             | 1             | -100.0%                       |
|                 | Median Sale Price | (No Sales)    | \$254,500     | N/A                           |

