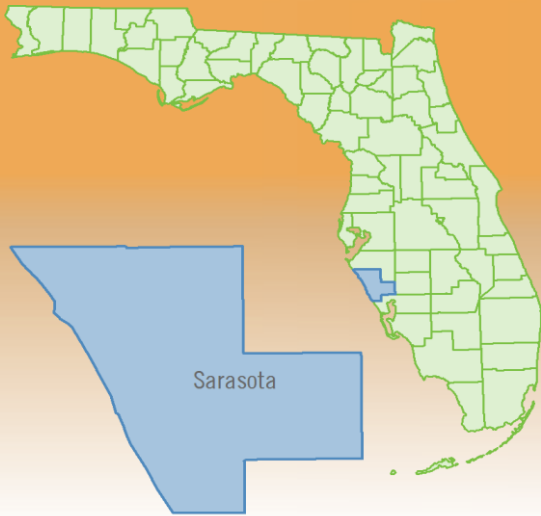


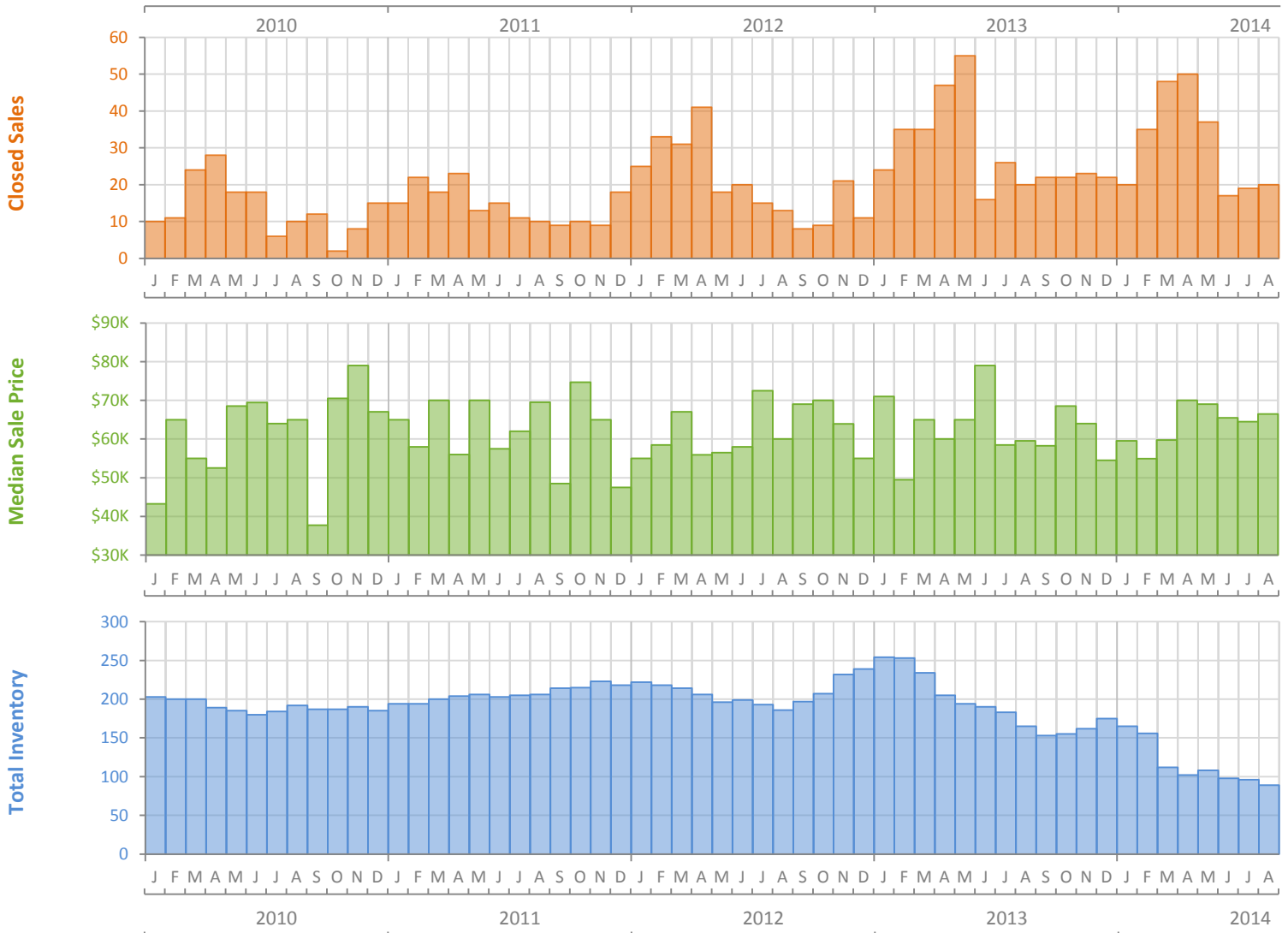
Monthly Market Summary - August 2014

Manufactured Homes

Sarasota County



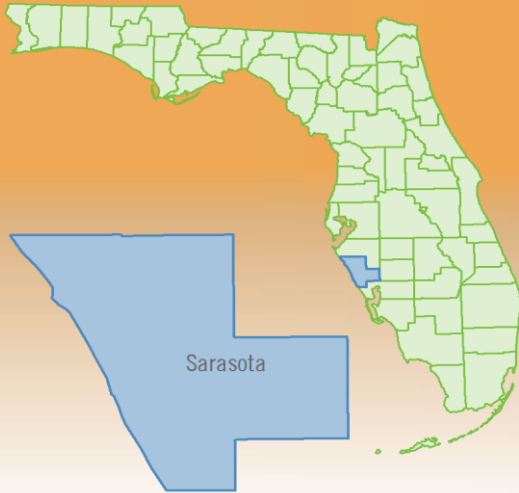
| | August 2014 | August 2013 | Percent Change Year-over-Year |
|--|-------------|-------------|-------------------------------|
| Closed Sales | 20 | 20 | 0.0% |
| Cash Sales | 18 | 19 | -5.3% |
| New Pending Sales | 19 | 22 | -13.6% |
| New Listings | 20 | 13 | 53.8% |
| Median Sale Price | \$66,450 | \$59,500 | 11.7% |
| Average Sale Price | \$70,285 | \$57,898 | 21.4% |
| Median Days on Market | 86 | 117 | -26.5% |
| Avg. Percent of Original List Price Received | 87.0% | 82.2% | 5.8% |
| Pending Inventory | 24 | 23 | 4.3% |
| Inventory (Active Listings) | 89 | 165 | -46.1% |
| Months Supply of Inventory | 3.2 | 6.4 | -50.6% |



Monthly Distressed Market - August 2014

Manufactured Homes

Sarasota County



| | | August 2014 | August 2013 | Percent Change Year-over-Year |
|-----------------|-------------------|-------------|-------------|-------------------------------|
| Traditional | Closed Sales | 19 | 20 | -5.0% |
| | Median Sale Price | \$70,000 | \$59,500 | 17.6% |
| Foreclosure/REO | Closed Sales | 0 | 0 | N/A |
| | Median Sale Price | (No Sales) | (No Sales) | N/A |
| Short Sale | Closed Sales | 1 | 0 | N/A |
| | Median Sale Price | \$43,400 | (No Sales) | N/A |

