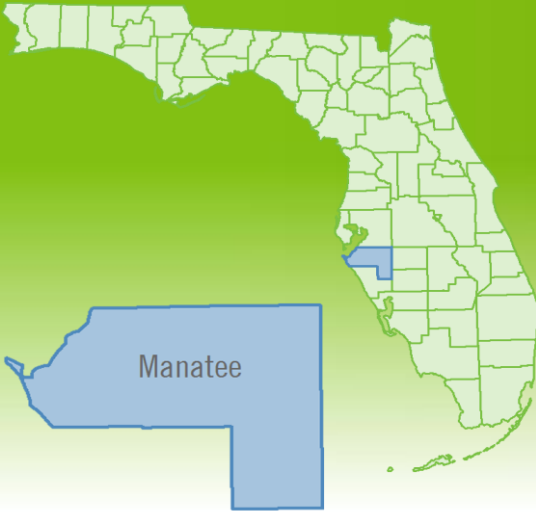


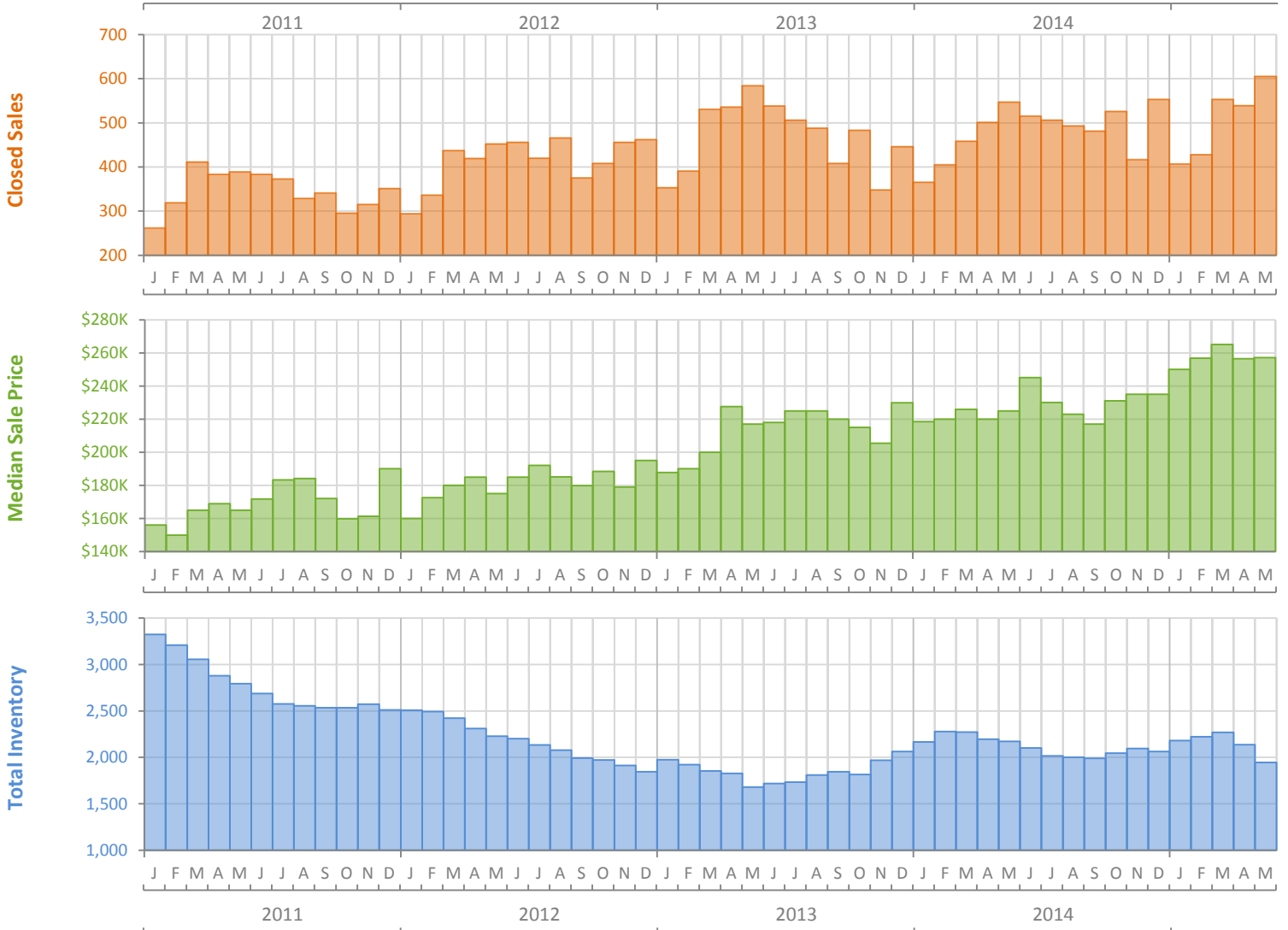
# Monthly Market Summary - May 2015

## Single Family Homes

### Manatee County



|  | May 2015  | May 2014  | Percent Change Year-over-Year |
|--|-----------|-----------|-------------------------------|
| Closed Sales                                 | 605       | 547       | 10.6%                         |
| Cash Sales                                   | 215       | 231       | -6.9%                         |
| New Pending Sales                            | 483       | 521       | -7.3%                         |
| New Listings                                 | 617       | 673       | -8.3%                         |
| Median Sale Price                            | \$257,111 | \$225,000 | 14.3%                         |
| Average Sale Price                           | \$328,724 | \$286,545 | 14.7%                         |
| Median Days on Market                        | 51        | 54        | -5.6%                         |
| Avg. Percent of Original List Price Received | 94.6%     | 93.5%     | 1.2%                          |
| Pending Inventory                            | 810       | 894       | -9.4%                         |
| Inventory (Active Listings)                  | 1,945     | 2,171     | -10.4%                        |
| Months Supply of Inventory                   | 3.9       | 4.7       | -18.3%                        |

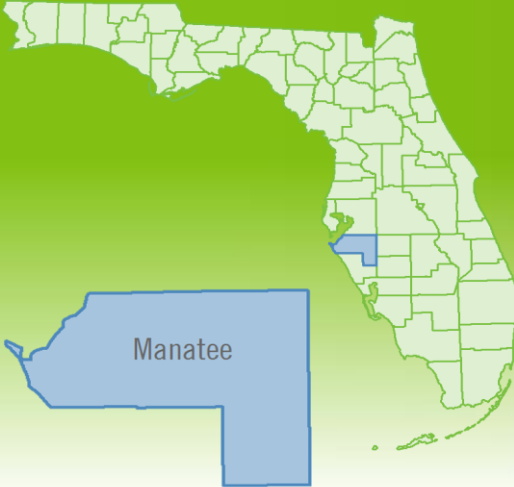


Produced by Florida REALTORS® with data provided by Florida's multiple listing services. Statistics for each month compiled from MLS feeds on the 15th day of the following month. Data released on Monday, June 22, 2015. Next data release is Wednesday, July 22, 2015.

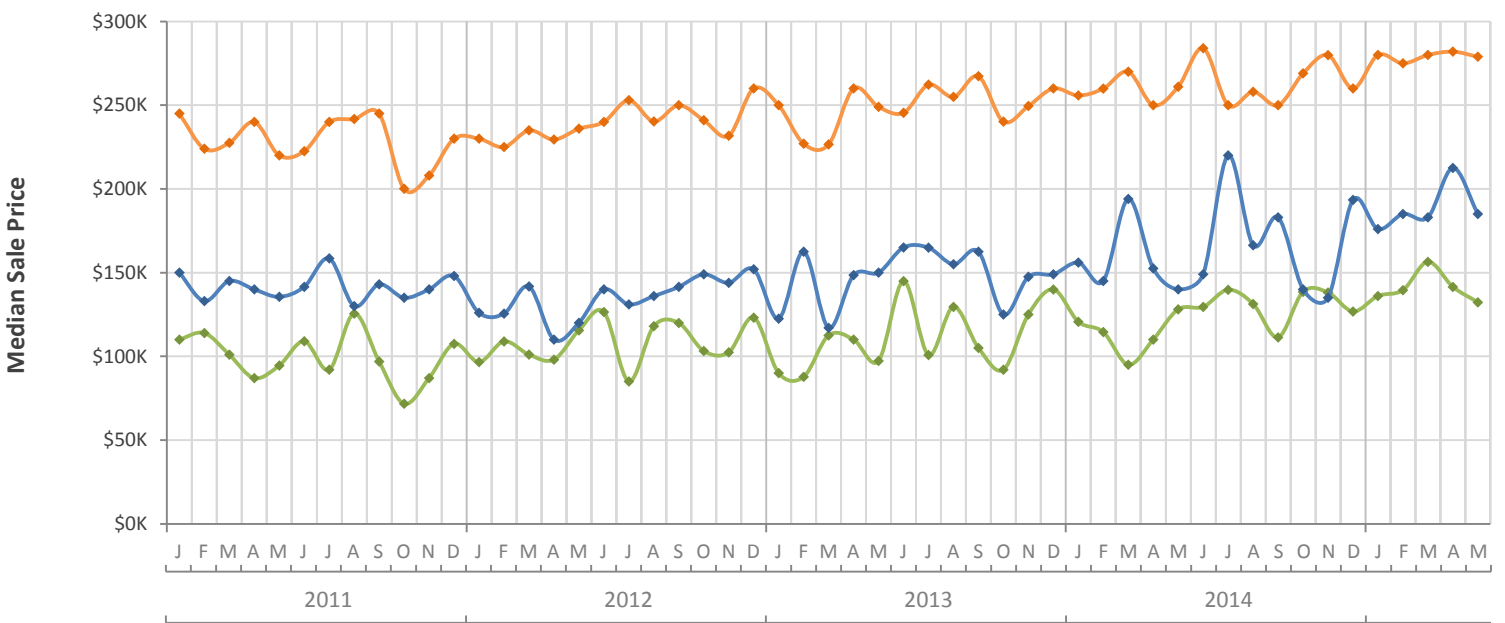
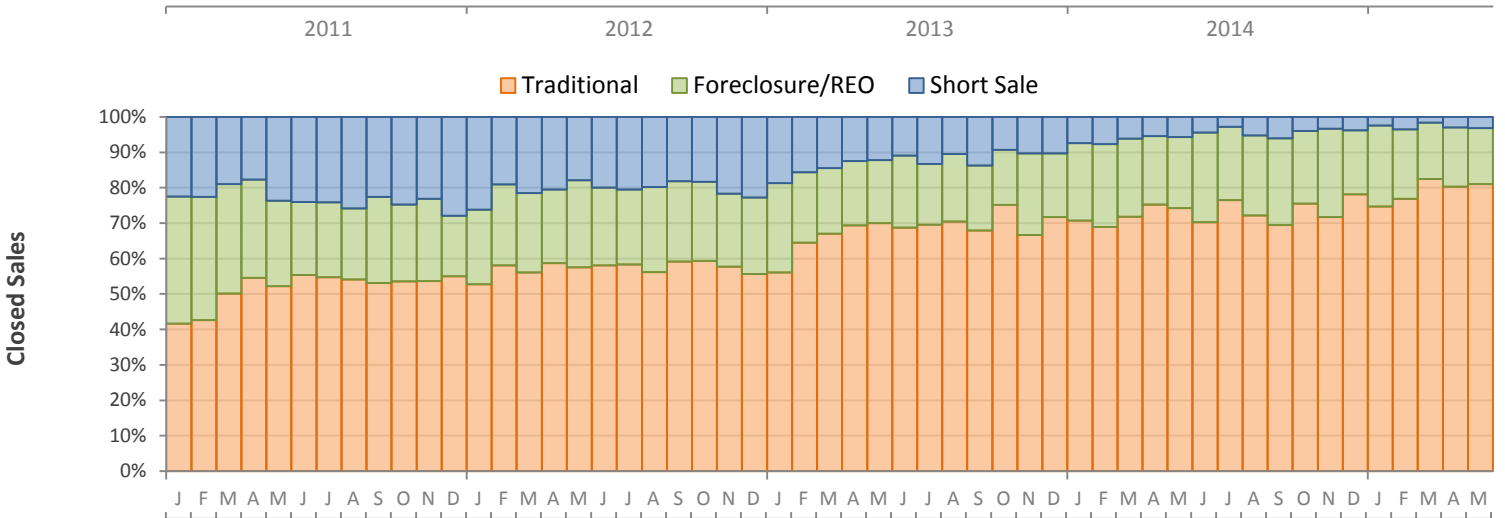
# Monthly Distressed Market - May 2015

## Single Family Homes

### Manatee County



|                 |                   | May 2015  | May 2014  | Percent Change Year-over-Year |
|-----------------|-------------------|-----------|-----------|-------------------------------|
| Traditional     | Closed Sales      | 490       | 406       | 20.7%                         |
|                 | Median Sale Price | \$278,950 | \$261,000 | 6.9%                          |
| Foreclosure/REO | Closed Sales      | 96        | 110       | -12.7%                        |
|                 | Median Sale Price | \$132,250 | \$128,060 | 3.3%                          |
| Short Sale      | Closed Sales      | 19        | 31        | -38.7%                        |
|                 | Median Sale Price | \$185,000 | \$140,000 | 32.1%                         |



Produced by Florida REALTORS® with data provided by Florida's multiple listing services. Statistics for each month compiled from MLS feeds on the 15th day of the following month. Data released on Monday, June 22, 2015. Next data release is Wednesday, July 22, 2015.