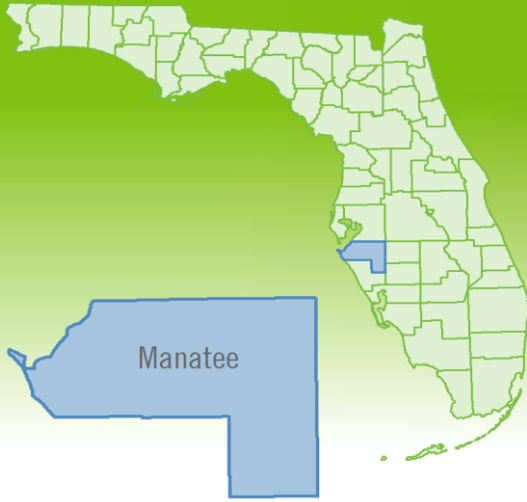


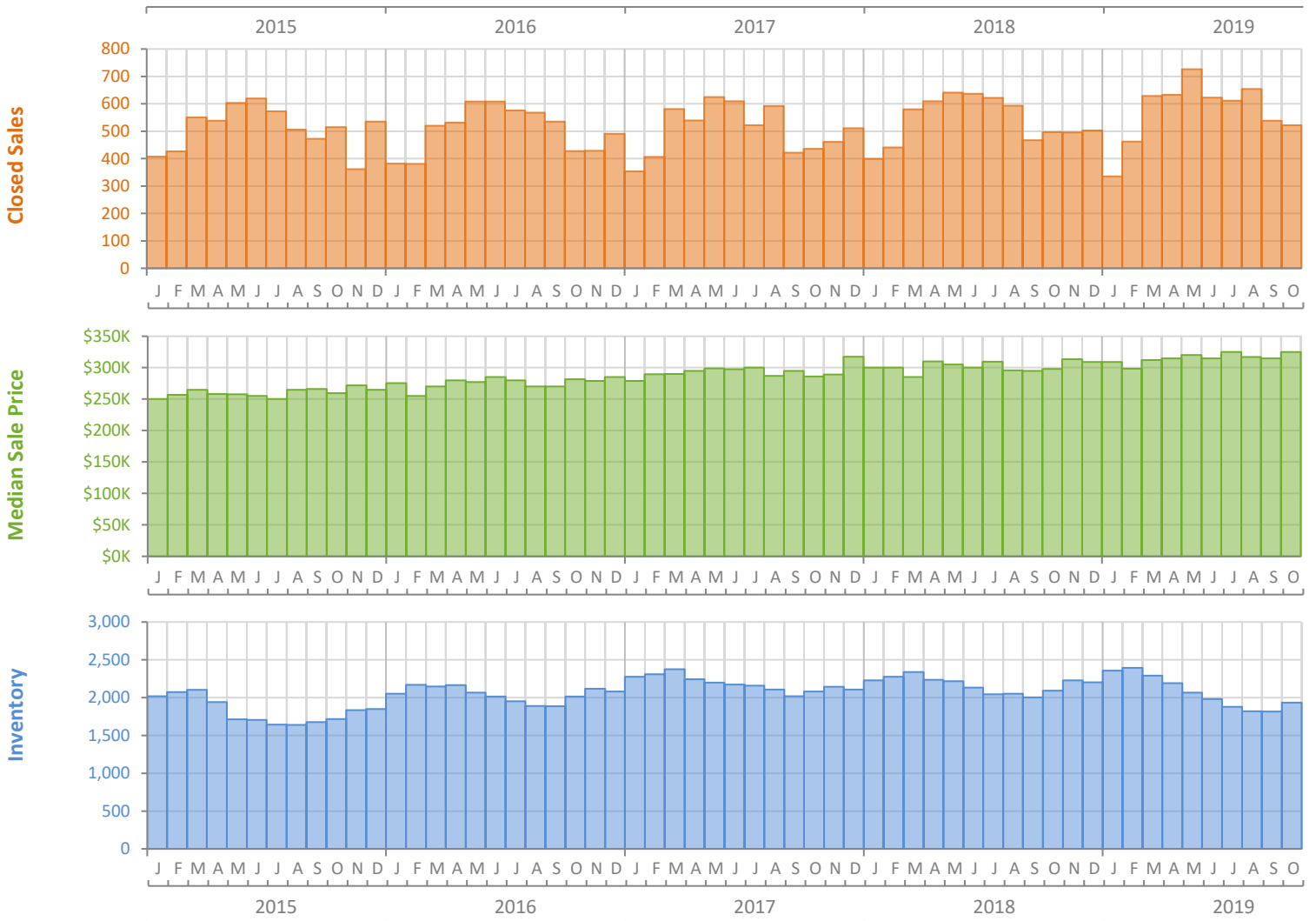
# Monthly Market Summary - October 2019

## Single Family Homes

### Manatee County



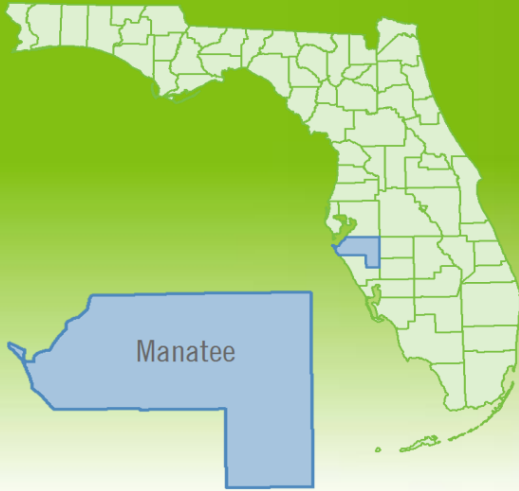
|  | October 2019    | October 2018    | Percent Change Year-over-Year |
|--|-----------------|-----------------|-------------------------------|
| Closed Sales                           | 522             | 497             | 5.0%                          |
| Paid in Cash                           | 140             | 137             | 2.2%                          |
| Median Sale Price                      | \$325,000       | \$298,000       | 9.1%                          |
| Average Sale Price                     | \$396,342       | \$369,104       | 7.4%                          |
| Dollar Volume                          | \$206.9 Million | \$183.4 Million | 12.8%                         |
| Med. Pct. of Orig. List Price Received | 96.4%           | 95.7%           | 0.7%                          |
| Median Time to Contract                | 42 Days         | 42 Days         | 0.0%                          |
| Median Time to Sale                    | 88 Days         | 87 Days         | 1.1%                          |
| New Pending Sales                      | 602             | 548             | 9.9%                          |
| New Listings                           | 733             | 720             | 1.8%                          |
| Pending Inventory                      | 817             | 697             | 17.2%                         |
| Inventory (Active Listings)            | 1,935           | 2,093           | -7.5%                         |
| Months Supply of Inventory             | 3.4             | 3.9             | -12.8%                        |



# Monthly Distressed Market - October 2019

## Single Family Homes

### Manatee County



|                 |                   | October 2019 | October 2018 | Percent Change Year-over-Year |
|-----------------|-------------------|--------------|--------------|-------------------------------|
| Traditional     | Closed Sales      | 508          | 482          | 5.4%                          |
|                 | Median Sale Price | \$327,000    | \$299,900    | 9.0%                          |
| Foreclosure/REO | Closed Sales      | 9            | 12           | -25.0%                        |
|                 | Median Sale Price | \$225,000    | \$197,450    | 14.0%                         |
| Short Sale      | Closed Sales      | 5            | 3            | 66.7%                         |
|                 | Median Sale Price | \$451,730    | \$204,000    | 121.4%                        |

