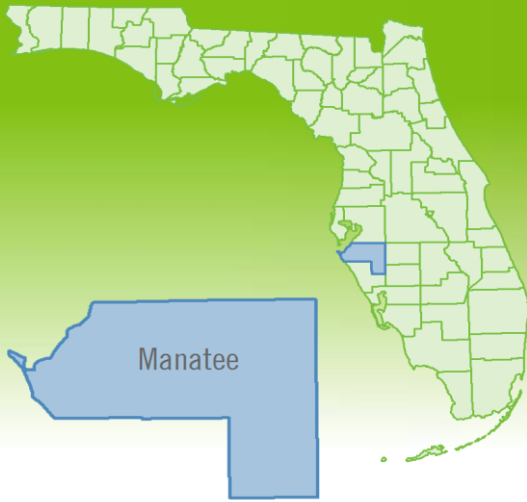


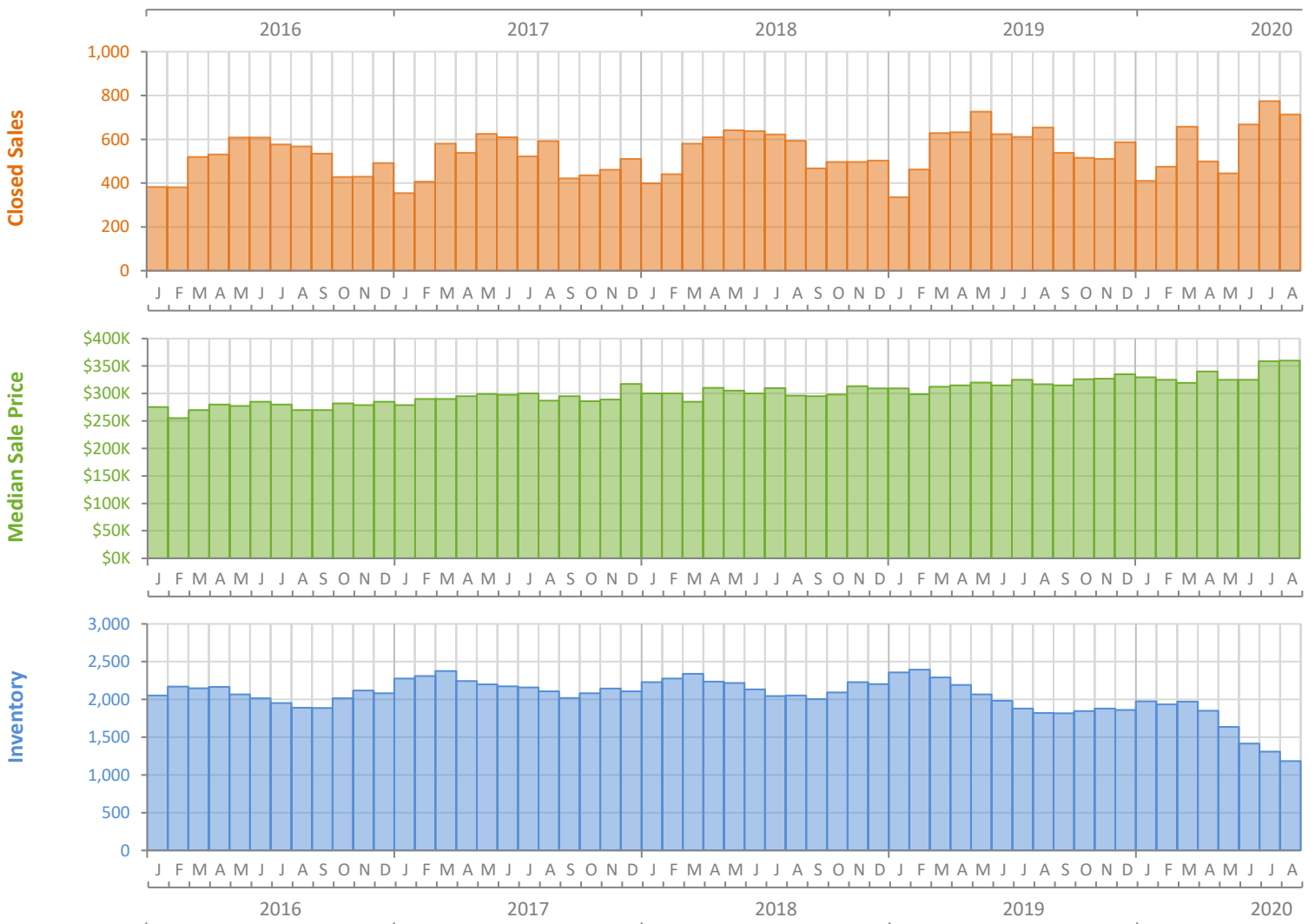
# Monthly Market Summary - August 2020

## Single Family Homes

### Manatee County



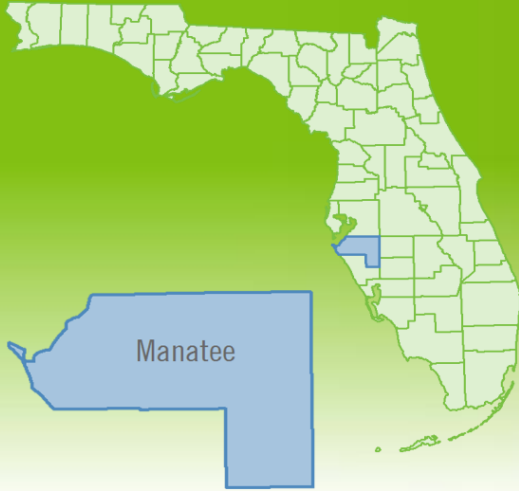
|  | August 2020     | August 2019     | Percent Change Year-over-Year |
|--|-----------------|-----------------|-------------------------------|
| Closed Sales                           | 713             | 654             | 9.0%                          |
| Paid in Cash                           | 146             | 158             | -7.6%                         |
| Median Sale Price                      | \$360,000       | \$317,000       | 13.6%                         |
| Average Sale Price                     | \$480,903       | \$408,738       | 17.7%                         |
| Dollar Volume                          | \$342.9 Million | \$267.3 Million | 28.3%                         |
| Med. Pct. of Orig. List Price Received | 97.4%           | 96.6%           | 0.8%                          |
| Median Time to Contract                | 30 Days         | 42 Days         | -28.6%                        |
| Median Time to Sale                    | 78 Days         | 86 Days         | -9.3%                         |
| New Pending Sales                      | 797             | 557             | 43.1%                         |
| New Listings                           | 725             | 664             | 9.2%                          |
| Pending Inventory                      | 1,146           | 774             | 48.1%                         |
| Inventory (Active Listings)            | 1,183           | 1,818           | -34.9%                        |
| Months Supply of Inventory             | 2.1             | 3.3             | -36.4%                        |



# Monthly Distressed Market - August 2020

## Single Family Homes

### Manatee County



|                 |                   | August 2020 | August 2019 | Percent Change Year-over-Year |
|-----------------|-------------------|-------------|-------------|-------------------------------|
| Traditional     | Closed Sales      | 705         | 633         | 11.4%                         |
|                 | Median Sale Price | \$360,000   | \$319,000   | 12.9%                         |
| Foreclosure/REO | Closed Sales      | 4           | 14          | -71.4%                        |
|                 | Median Sale Price | \$245,500   | \$238,200   | 3.1%                          |
| Short Sale      | Closed Sales      | 4           | 7           | -42.9%                        |
|                 | Median Sale Price | \$240,000   | \$215,000   | 11.6%                         |

